

Lune



Seating: 4 Occupants
 Size (LxWxH): 76" Diameter
 193 cm Diameter
 Weight Dry/Wet: 544 / 2201 lbs.
 247 / 998 kg
 Gals/Liters: 200 / 756
 Pumps: Pump 1 1.5Hp, 3.0bHp, 115V, 2Sp
 Voltage/Amps: 240V/30A/40A (4-Wire)
 120V/15A/30A GFCI Core (3Wire)
 Jets: 18

- Excel-X™ Siding •
- Freeze Protection •
- Sealed "All Climate" Base •
- Premier Styled Cover •
- Halo Pro-Loc™ Stainless Steel Jets •
- Vital Energy Insulation System •
- Aurora Beverage Coasters •
- LED Interior Light •

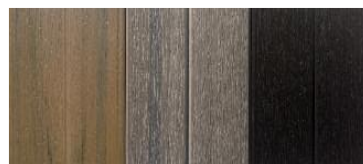
- Options:**
- CleanZone™ •

- Dealer Installed Option*
- 15ft, 15A Cord •



Cabinet

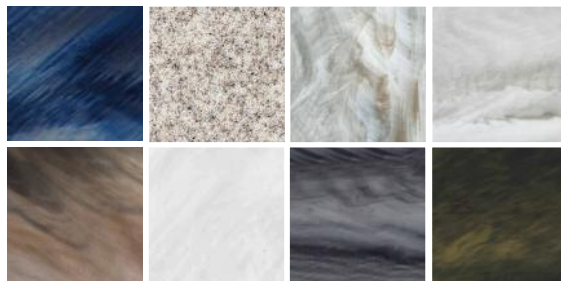
Excel-X™ This ecologically friendly, high-impact styrene looks and feels like real, natural wood. It won't weather or stain and is virtually maintenance free.



Pecan Gray Mocha

Colors

Your Vita Spa is available in eight vibrant colors to complement the beauty of its design.



Left to right: Majestic Sky, Sahara, Smokey Mountain, Glacier Mountain, Tuscan Sun, Silver Marble, Storm Clouds and Midnight Canyon